



PDBF

PALLI DARIDRO BIMOCHON FOUNDATION (PDBF)
RURAL PO RT ALL IATION FOUNDATION

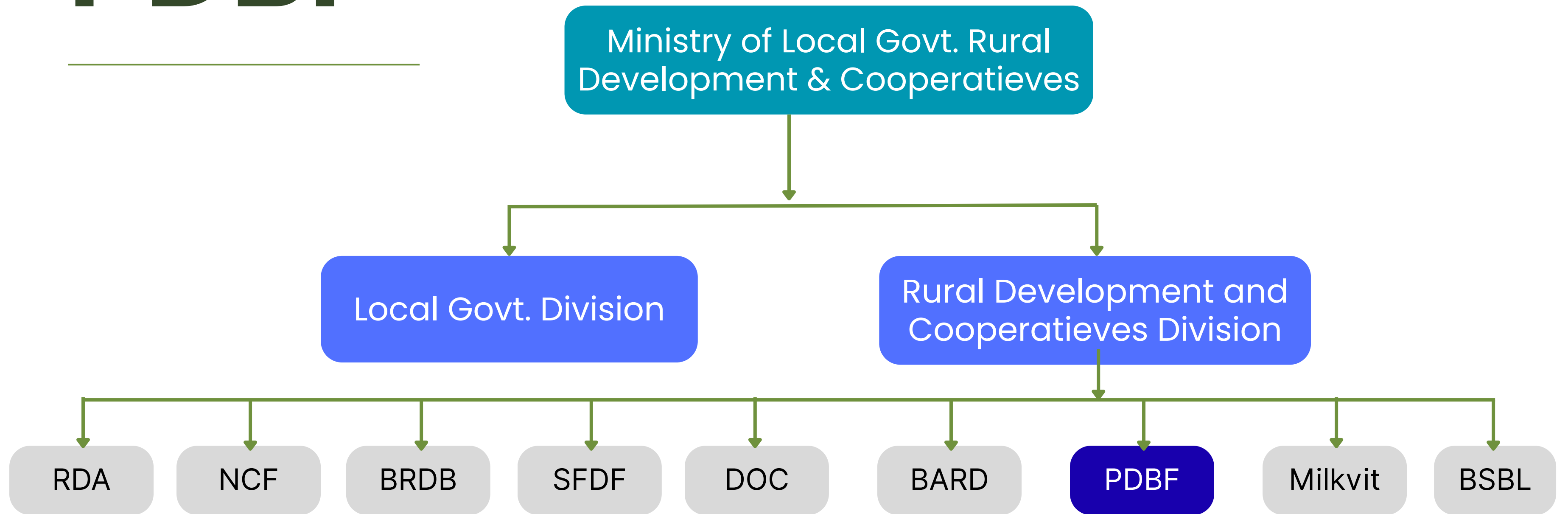
Ministry of Local Government, Rural Development & Cooperatieves
People's Republic of Bangladesh

PDBF

Palli Daridra Bimochon Foundation (PDBF) is a self-governed government organization under the RDCD, Ministry of LGRD & Cooperatives. Established under the PDBF Act, 1999, aiming to reduce rural poverty through financial services, livelihood support, and community development in Bangladesh.



PDBF



Timeline

PDBF

1984: Bangladesh Rural Development Board launched the Rural Poverty Alleviation Programme (RPP/RD-2) with financial support from IDA, ODA, CIDA, UNDP, and the World Bank.

1993: RD-12 project extended to 1996.

1988: CIDA-funded RD-12 project started in 139 upazilas of 17 districts.

1996: Renamed RBP and extended to 1999.

1999: PDBF was established as a statutory, self-governed organization under the PDBF Act, 1999 (Act No. 23).

PDBF Vision



To **uplift the socio-economic conditions** of the poor and disadvantaged by building people's organizations, providing inclusive financing, enhancing skills through multi-dimensional training, promoting capital formation and asset creation, reducing social inequality, and ensuring gender equality through women's empowerment.

PDBF Mission

- Formation of new human organizations and social reconstruction involving poor and disadvantaged communities;
- Changing the mindset and improving the capacities of organizational members through leadership development, social development, and various income-generating and vocational training programs;
- Promoting a favorable attitude toward women in all institutional activities and undertaking positive initiatives for women's empowerment;
- Providing loan support to poor and disadvantaged people for livelihood generation and employment creation;
- Implementing 'Small Entrepreneur' and 'Women Entrepreneur' loan programs to foster entrepreneurship;
- Developing savings habits among beneficiaries through various savings schemes, enabling capital formation, investment, savings growth, and creation of personal assets;
- Undertaking and implementing multidimensional rural development initiatives through mutual collaboration with various government/non-government, national, and international organizations; and
- Adopting development projects aimed at improving the living standards of vulnerable rural populations, reducing poverty, and ensuring the continuity of sustainable development.

Key Statistics Bangladesh



Population
170.4 Mn



Rural Population
↑ 68.3%



Bank Account
↓ 14.2%



Labor Force in Agri.
↑ 44.6%



National Poverty
18.7%



Rural Poverty
↑ 20.5%



National Per Capita
745 \$



Rural Per Capita
↓ 596 \$

1 BDT ≈ 0.008165 USD



Key Statistics Bangladesh



Female Formal Employment

↓ 44.2%



Male Formal Employment

↑ 80.9%



Higher Education Enrollment

23.08%



Female Higher
Education Enrollment

↓ 21.9%



Key Statistics

PDBF



Society

31,897



Beneficiary

1.27 Mn



Cumilative
Beneficiary

3.47 Mn



Cumulative Loan
Disbursed

2140 Mn \$



Savings
Fund

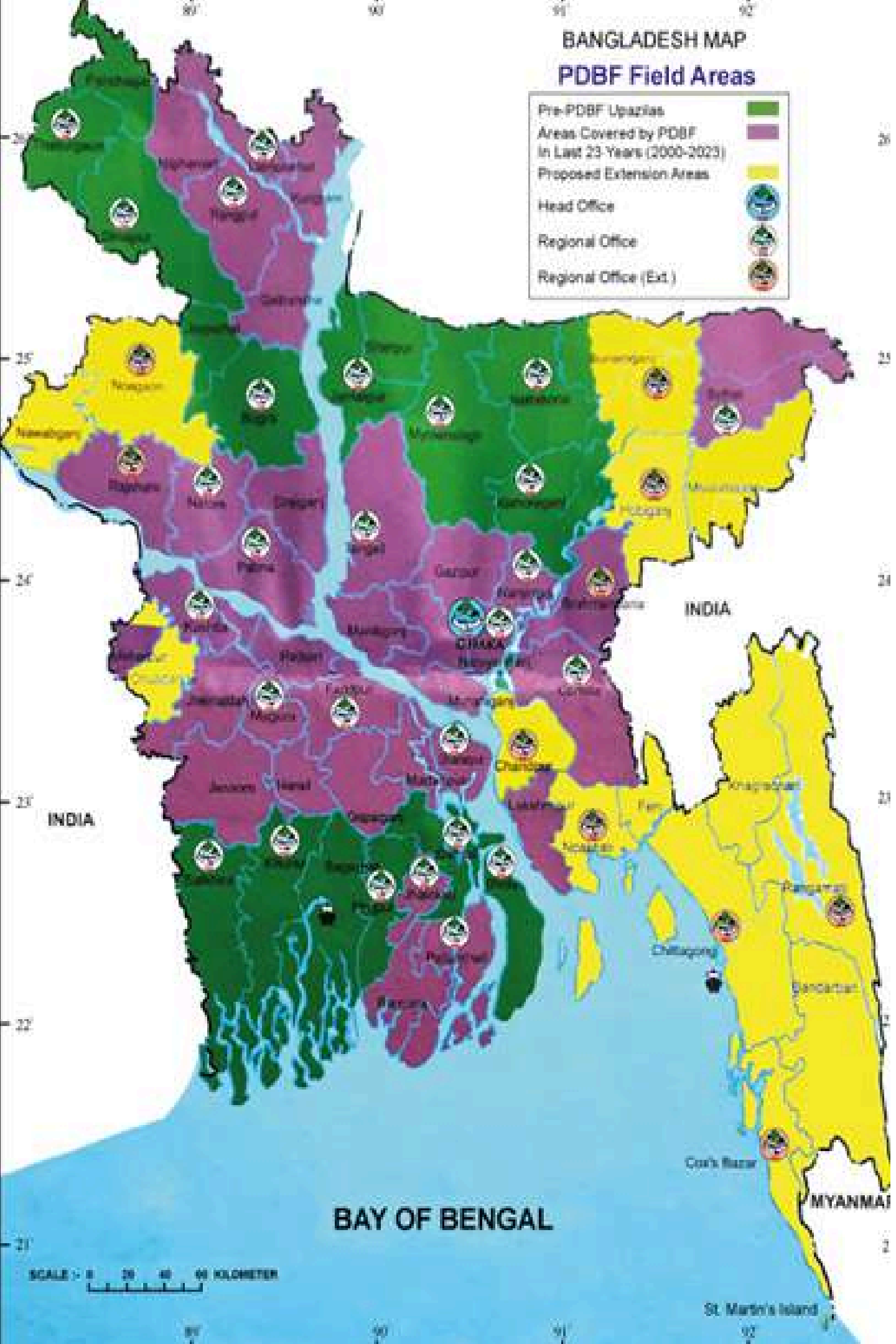
108 Mn \$



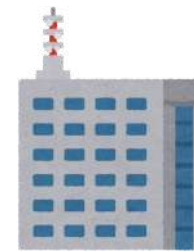
Recovery
Rate

98%

1 BDT \approx 0.008165 USD

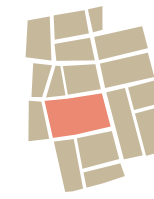


Area Coverage



Headquarter

01



Region Office

37



Audit Office

10



Upazilla Office

538



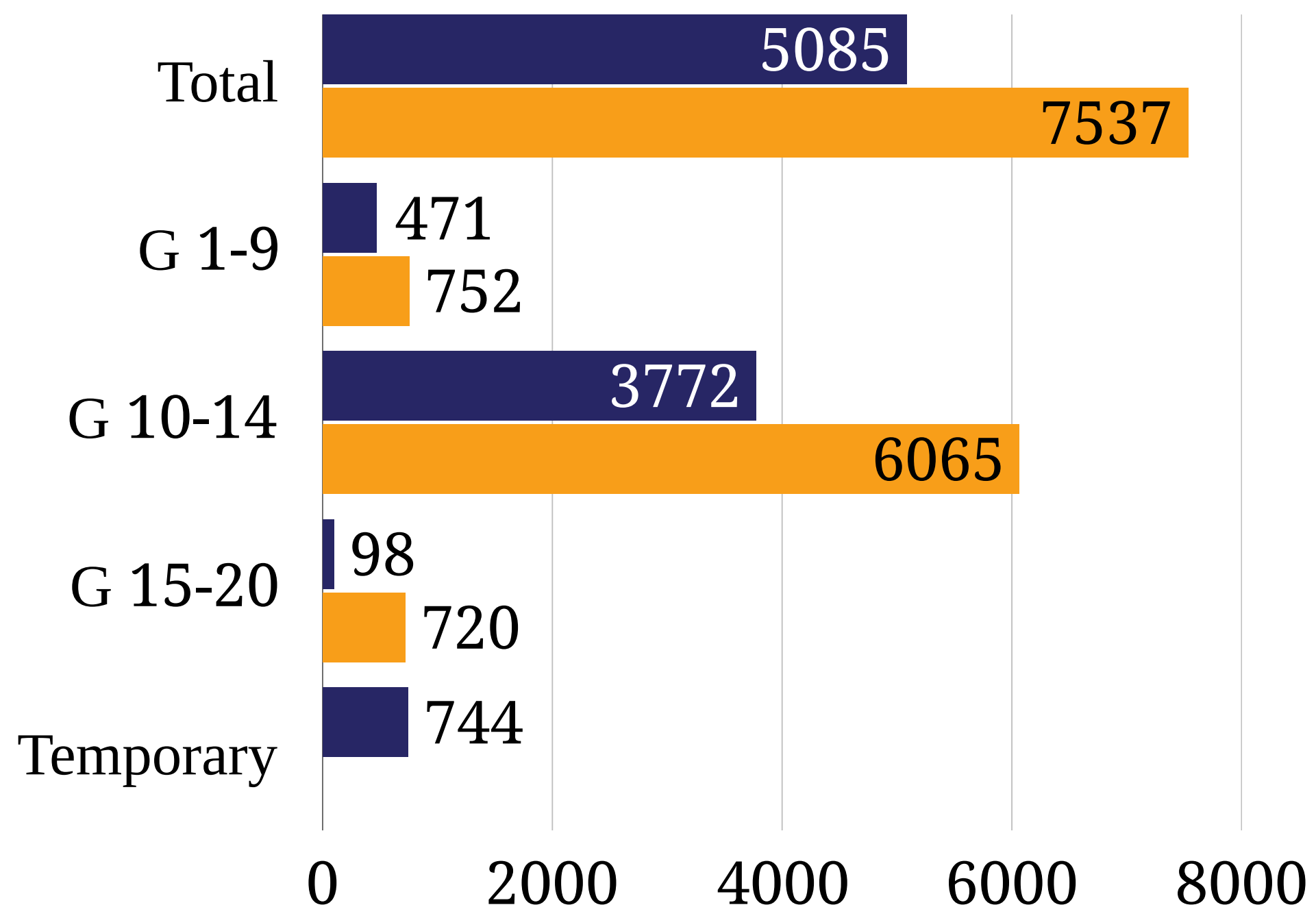
Coverage

100%



Human Capital

● In Service ● Approved

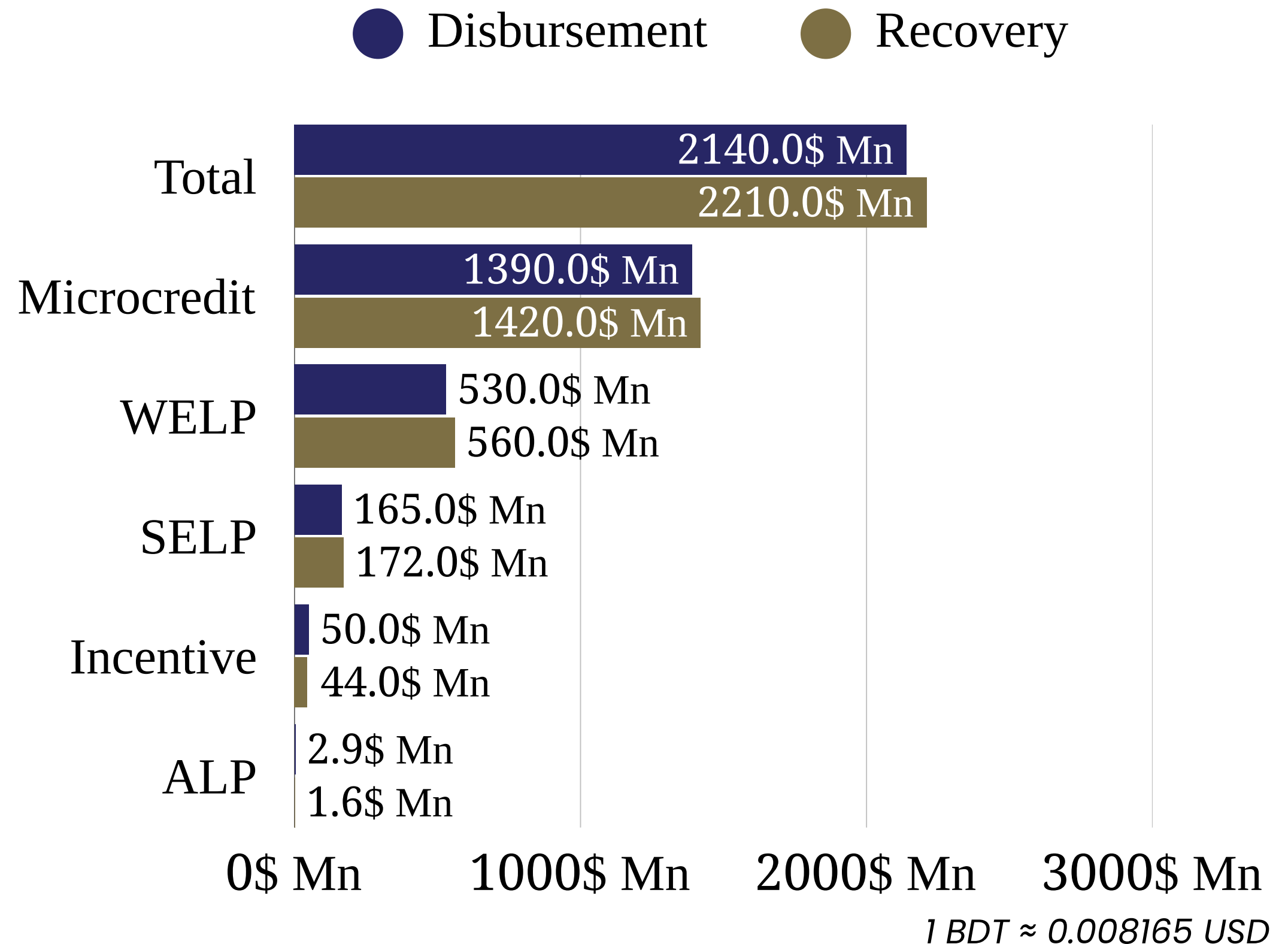


Loan Program

To alleviate poverty among marginalized communities, PDBF has so far disbursed approximately **2140 Mn \$** in loans.

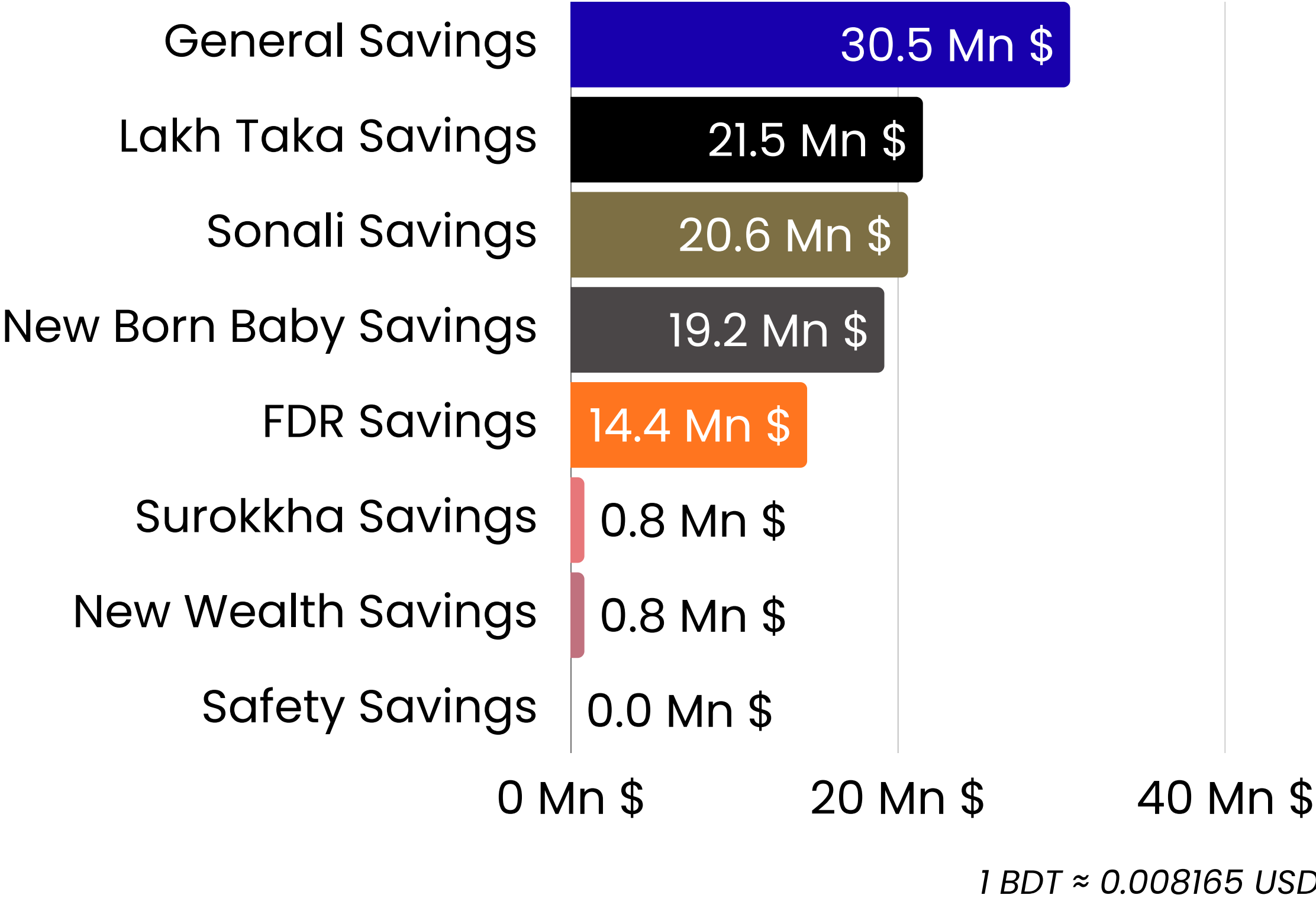
- Microcredit
- Women Entrepreneur Loan Program (WELP)
- Small Entrepreneur Loan Program (SELP)
- Incentive Loan Program
- Agricultural Livelihood Loan Program (ALP)

Cumulative data from the beginning up to June 2025.

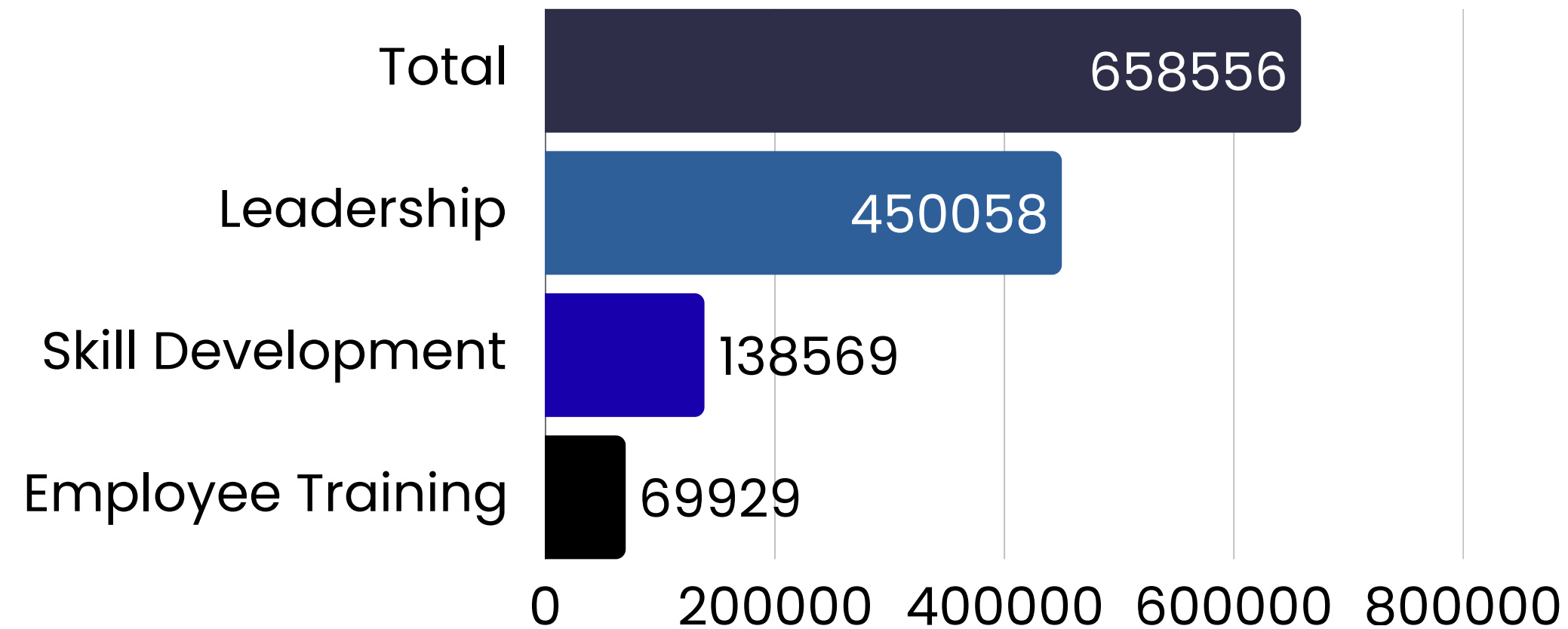


Savings Program

- Members have built a collective savings fund of **108 Mn \$** through various schemes.
- **PDBF ranks highest** in total savings among institutions under the Rural Development & Cooperatives Division.



Skill Development Program



Next Focus

“With deep grassroots presence and decades of experience in pro-poor development, PDBF aims to collaborate bilaterally with international bodies to exchange knowledge, co-design programs, and scale impactful community solutions”.



Food and Agriculture
Organization of the
United Nations



Italian Federation
for Agronomist
and Foresters

**thank
you**

